



SKYBOY (TRUCK)

AT-185CG

JAPANESE SPECIFICATIONS

SPEC. NO.	AT-185-1-00003
MAXIMUM BUCKET BOTTOM HEIGHT	18.5m
MAXIMUM BUCKET LOADING CAPACITY	200kg or 2 persons

Control No. JA-04

AT-185CG AERIAL PLATFORM

AERIAL PLATFORM SPECIFICATIONS

MAXIMUM BUCKET LOADING CAPACITY

200kg or 2 persons

MAXIMUM BUCKET BOTTOM HEIGHT

18.5m

INSIDE DIMENSIONS OF BUCKET

1.2m × 0.7m × 0.95m (Length × Width × Height)

BOOM ELEVATION ANGLE

-13° ~ 80°

BOOM ELEVATION SPEED

-13° ~ 80° / 35s

BOOM LENGTH

6.35m ~ 15.03m (telescoping) +3.0m (articulating)

BOOM EXTENSION SPEED

8.68m / 70s

BOOM ARTICULATION SPEED

160° / 35s (in straightening direction)

SWING ANGLE

360° continue

SWING SPEED

1.0rpm

BUCKET

Bucket

Steel-plate

Automatic leveling system

Vertically-coupled double acting hydraulic cylinder and chain system

Swing device

Manual (left: 45° ~ right: 45°)

BOOM

3-section hydraulic synchronized telescoping and 1-section hydraulic articulating boom

Welded structure with box type cross section

BOOM ELEVATION

Double acting hydraulic cylinder direct pushing system

BOOM EXTENSION

Double acting hydraulic cylinder direct pushing and wire rope system

BOOM ARTICULATION DEVICE

Double acting hydraulic cylinder push-up link system

SWING

Hydraulic motor driven via worm reduction gear

Ball bearing type

BUCKET REMOTE CONTROL DEVICE

Electric type (wired)

OUTRIGGERS

Fully hydraulic H-type

Welded structure with box type cross section

Slides · jacks each provided with independent operation device.

Full extended width 3.5m

HYDRAULIC PUMPS

2 gear pumps

HYDRAULIC OIL TANK CAPACITY

Approx. 55 liters

OPERATION DEVICE

Bucket

Swing, boom elevation, boom telescoping, boom articulation, engine start-stop, acceleration, emergency stop, emergency pump, power supply (for bucket operation)

[Automatic working area limiter monitor, emergency stop monitor]

Swing frame

Swing, boom elevation, boom telescoping, boom articulation, Bucket leveling, acceleration, automatic working area limiter (AWL) check, emergency switch, emergency pump, emergency stop

Outrigger

Outrigger extension/retraction, outrigger selection, acceleration

SAFETY DEVICES

Automatic working area limiter (AWL)

Emergency pump

Emergency stop device (with indication lamp)

Foot switch (bucket)

Boom interlock device

Jack interlock device

Jack indicator

Hydraulic safety valve

Hydraulic cylinder lock device

Level gauge

EQUIPMENTS

Power supply intake line (rating: 100V - 10A)

Work lamp (lower)

STANDARD ACCESSORIES

Wood blocks

Chocks

Tools

Grease pump

CARRIER SPECIFICATIONS**GENERAL DATA****[ISUZU CARRIER]****CARRIER MODEL**

ISUZU U-NPR66LVN

ENGINE

Type 4HF1
 Piston displacement 4,334cc
 Max. output 135PS at 3,200rpm
 Max. torque 32.0kg·m at 1,700rpm

TRANSMISSION

5 forward and 1 reverse speeds

BATTERY VOLTAGE

24V

FUEL TANK CAPACITY

100 liters

CAPACITY

3 persons

TIRES

Front 7.00R16-12PRLT
 Rear 7.00R16-12PRLT

EQUIPMENTS

Spare tire
 Floor mat
 Vehicle caring set
 Tools

DIMENSIONS

Overall length 6,620mm
 Overall width 1,995mm
 Overall height 3,100mm
 Wheel base 3,365mm
 Tread Front 1,665mm
 Rear 1,485mm

WEIGHTS (standard)

Vehicle weight 6,290kg
 Gross vehicle weight 6,455kg

PERFORMANCE

Max. traveling speed 105km/h (calculated value)
 Gradeability (tan θ) 0.36 (calculated value)
 Min. turning radius 6.1m

[MITSUBISHI CARRIER]**CARRIER MODEL**

MITSUBISHI U-FE447E

ENGINE

Type 4D33
 Piston displacement 4,214cc
 Max. output 130PS at 3,200rpm
 Max. torque 31.0kg·m at 1,800rpm

TRANSMISSION

5 forward and 1 reverse speeds

BATTERY VOLTAGE

24V

FUEL TANK CAPACITY

100 liters

CAPACITY

3 persons

TIRES

Front 7.00R16-12PRLT
 Rear 7.00R16-12PRLT

EQUIPMENTS

Spare tire
 Floor mat
 Vehicle caring set
 Tools

DIMENSIONS

Overall length 6,620mm
 Overall width 1,995mm
 Overall height 3,150mm
 Wheel base 3,350mm
 Tread Front 1,640mm
 Rear 1,505mm

WEIGHTS (standard)

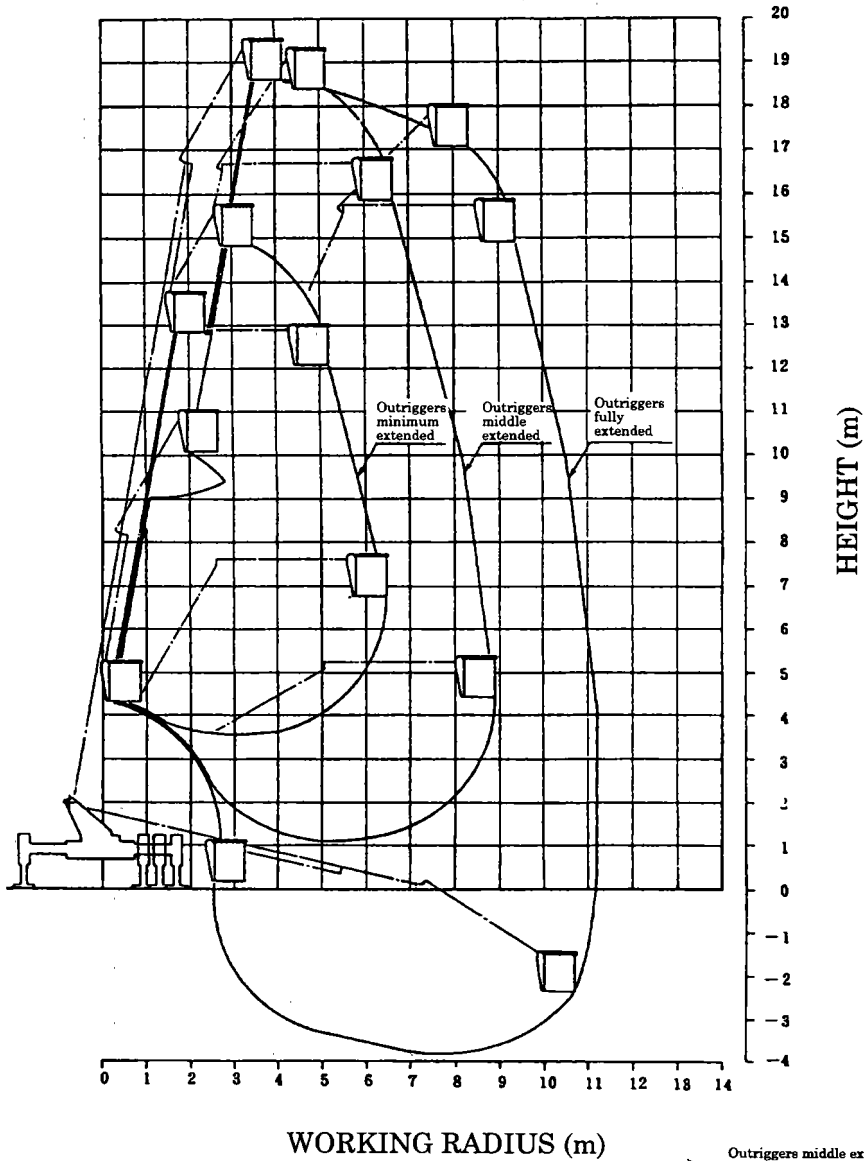
Vehicle weight 6,270kg
 Gross vehicle weight 6,435kg

PERFORMANCE

Max. traveling speed 100km/h (calculated value)
 Gradeability (tan θ) 0.38 (calculated value)
 Min. turning radius 6.1m

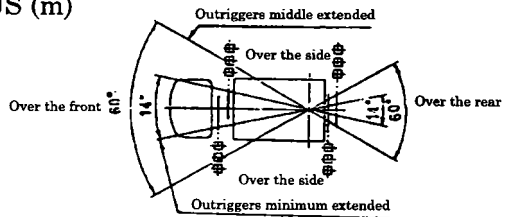
WORKING RANGES

Maximum bucket loading capacity: 200kg



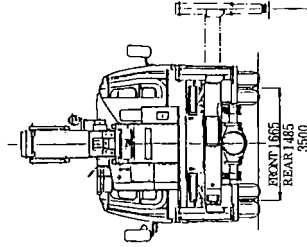
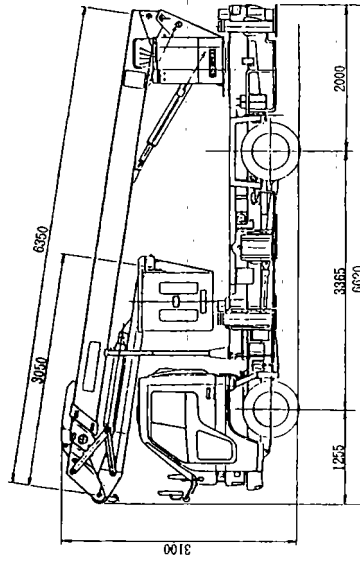
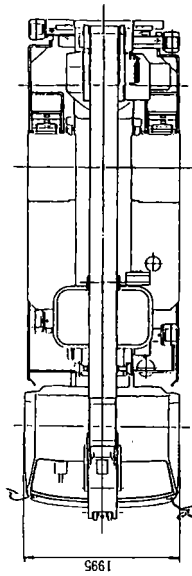
NOTES:

1. The working range is based on the condition that the outriggers are installed on firm and level surface.
2. The above figure indicates the working range to the sides. The working ranges toward the front and rear are the same as the working range when the outrigger is fully extended.
3. The deflection of the boom is not incorporated in the above figure.



DIMENSIONS (1/100)

ISUZU U-NPR66LVN



DIMENSIONS (1/100)
MITSUBISHI U-FE447E

