



SKYBOY (TRUCK)

AT-155CG

JAPANESE SPECIFICATIONS

SPEC. NO.	AT-155-1-00003
MAXIMUM BASKET BOTTOM HEIGHT	15.5m
MAXIMUM BASKET LOADING CAPACITY	200kg or 2 persons

Control No. JA-04

AT-155CG AERIAL PLATFORM

AERIAL PLATFORM SPECIFICATIONS

MAXIMUM BASKET LOADING CAPACITY

200kg or 2 persons

MAXIMUM BASKET BOTTOM HEIGHT

15.5m

INSIDE DIMENSIONS OF BASKET

1.5m × 0.8m × 0.95m (Length × Width × Height)

BOOM ELEVATION ANGLE

-13° ~ 80°

BOOM ELEVATION SPEED

-13° ~ 80° / 35s

BOOM LENGTH

5.25m ~ 12.1m (telescoping) +3.0m (articulating)

BOOM EXTENSION SPEED

6.85m / 55s

BOOM ARTICULATION SPEED

160° / 35s (in straightening direction)

SWING ANGLE

360° continue

SWING SPEED

1.0rpm

BASKET

Basket

Steel-tube

Automatic leveling system

Vertically-coupled double acting hydraulic cylinder and chain system

Swing device

Manual (left: 45° ~ right: 45°)

BOOM

3-section hydraulic synchronized telescoping and 1-section hydraulic articulating boom

Welded structure with box type cross section

BOOM ELEVATION

Double acting hydraulic cylinder direct pushing system

BOOM EXTENSION

Double acting hydraulic cylinder direct pushing and wire rope system

BOOM ARTICULATION DEVICE

Double acting hydraulic cylinder push-up link system

SWING

Hydraulic motor driven via worm reduction gear

Ball bearing type

BASKET REMOTE CONTROL DEVICE

Electric type (wired)

OUTRIGGERS

Fully hydraulic H-type

Welded structure with box type cross section

Slides · jacks each provided with independent operation device.

Full extended width 3.3m

HYDRAULIC PUMPS

2 gear pumps

HYDRAULIC OIL TANK CAPACITY

Approx. 55 liters

OPERATION DEVICE

Basket

Swing, boom elevation, boom telescoping, boom articulation, engine start-stop, acceleration, emergency stop, emergency pump, power supply (for basket operation)

[Automatic working area limiter monitor, emergency stop monitor]

Swing frame

Swing, boom elevation, boom telescoping, boom articulation, basket leveling, acceleration, automatic working area limiter (AWL) check, emergency switch, emergency pump, emergency stop

Outrigger

Outrigger extension/retraction, outrigger selection, acceleration

SAFETY DEVICES

Automatic working area limiter (AWL)

Emergency pump

Emergency stop device (with indication lamp)

Foot switch (basket)

Boom interlock device

Jack interlock device

Jack indicator

Hydraulic safety valve

Hydraulic cylinder lock device

Level gauge

EQUIPMENTS

Power supply intake line (rating: 100V - 10A)

Work lamp (lower)

STANDARD ACCESSORIES

Wood blocks

Chocks

Tools

Grease pump

CARRIER SPECIFICATIONS**GENERAL DATA****[MITSUBISHI CARRIER]****CARRIER MODEL**

MITSUBISHI U-FE538B

ENGINE

Type 4D35
 Piston displacement 4,561cc
 Max. output 140PS at 3,200rpm
 Max. torque 34.0kg·m at 1,600rpm

TRANSMISSION

5 forward and 1 reverse speeds

BATTERY VOLTAGE

24V

FUEL TANK CAPACITY

70 liters

CAPACITY

3 persons

TIRES

Front 7.00-16-12PRLT
 Rear 7.00-16-12PRLT

EQUIPMENTS

Spare tire
 Floor mat
 Vehicle caring set
 Tools

DIMENSIONS

Overall length 5,550mm
 Overall width 1,880mm
 Overall height 3,100mm
 Wheel base 2,500mm
 Tread Front 1,390mm
 Rear 1,435mm

WEIGHTS (standard)

Vehicle weight 5,990kg
 Gross vehicle weight 6,155kg

PERFORMANCE

Max. traveling speed 110km/h (calculated value)
 Gradeability (tan θ) 0.44 (calculated value)
 Min. turning radius 5.1m

[ISUZU CARRIER]**CARRIER MODEL**

ISUZU KC-NKR66E2N

ENGINE

Type 4HF1
 Piston displacement 4,334cc
 Max. output 130PS at 3,200rpm
 Max. torque 31.0kg·m at 1,800rpm

TRANSMISSION

5 forward and 1 reverse speeds

BATTERY VOLTAGE

24V

FUEL TANK CAPACITY

75 liters

CAPACITY

3 persons

TIRES

Front 7.00-16-12PRLT
 Rear 7.00-16-12PRLT

EQUIPMENTS

Spare tire
 Floor mat
 Vehicle caring set
 Tools

DIMENSIONS

Overall length 5,550mm
 Overall width 1,880mm
 Overall height 3,050mm
 Wheel base 2,460mm
 Tread Front 1,385mm
 Rear 1,425mm

WEIGHTS (standard)

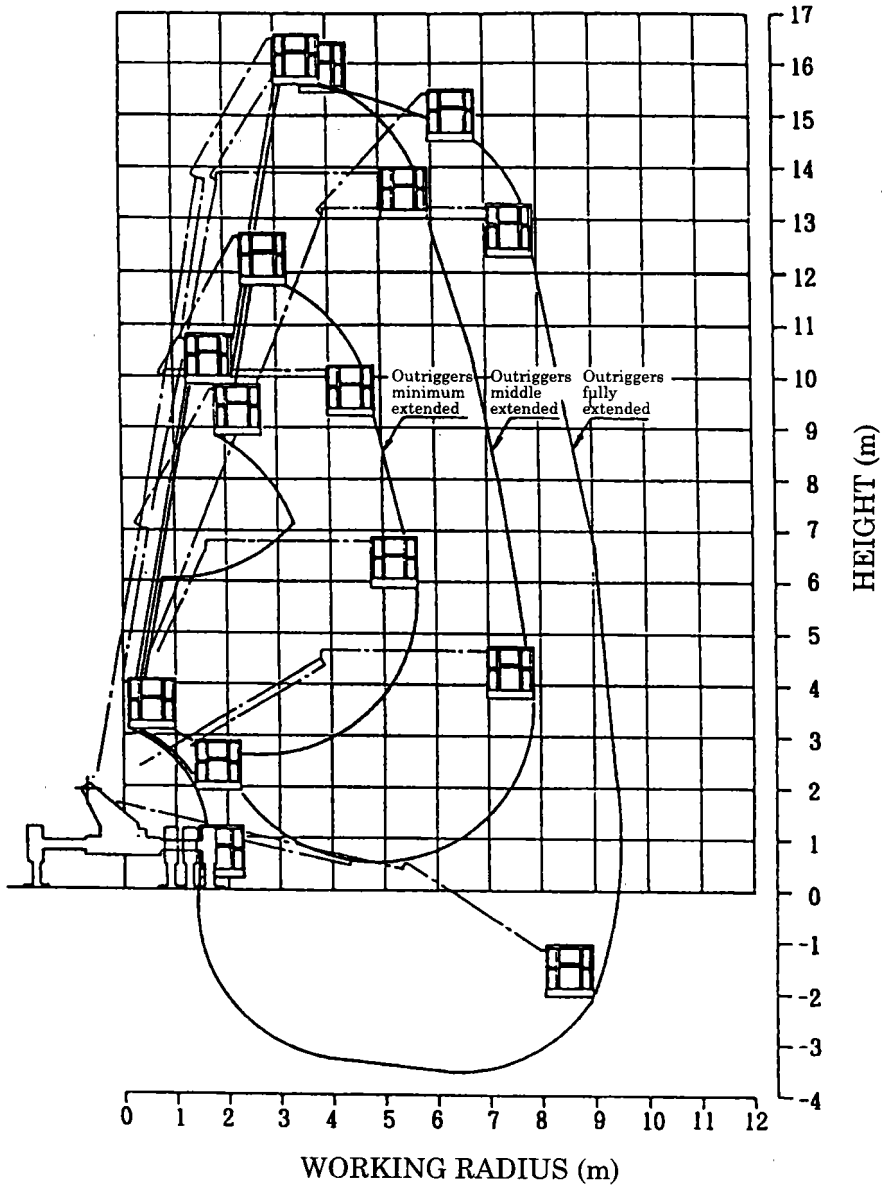
Vehicle weight 6,040kg
 Gross vehicle weight 6,205kg

PERFORMANCE

Max. traveling speed 115km/h (calculated value)
 Gradeability (tan θ) 0.34 (calculated value)
 Min. turning radius 5.5m

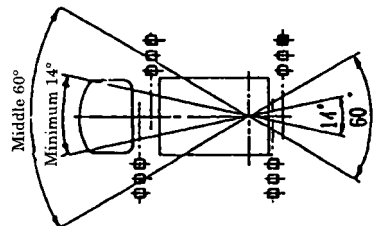
WORKING RANGES

Maximum basket loading capacity: 200kg



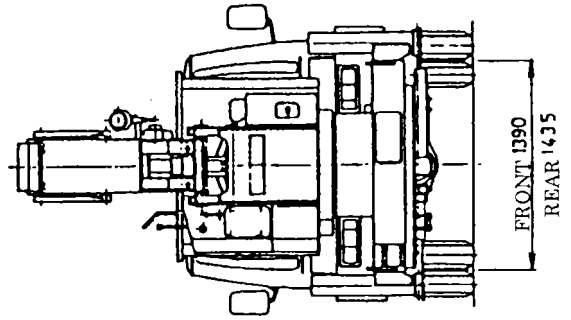
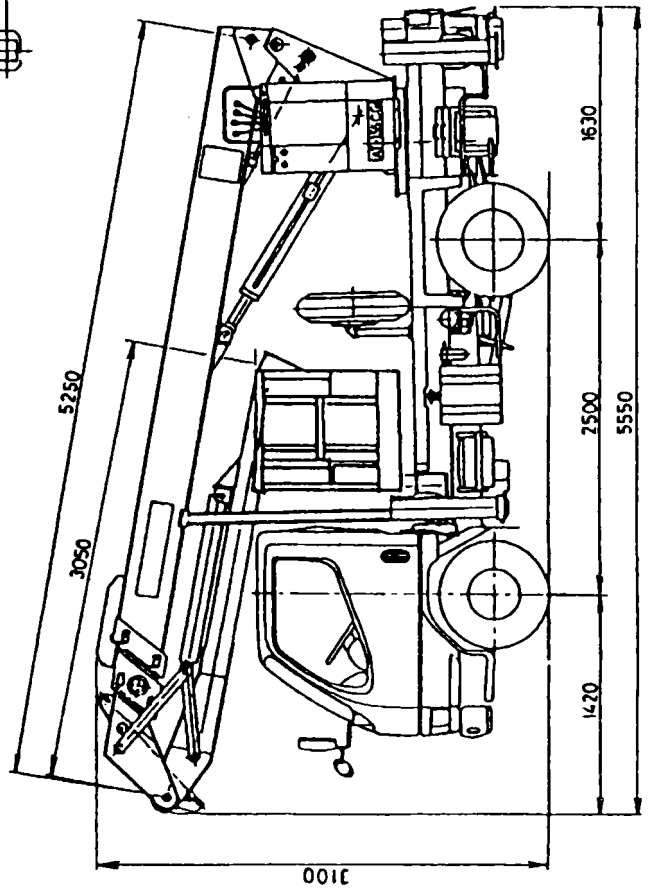
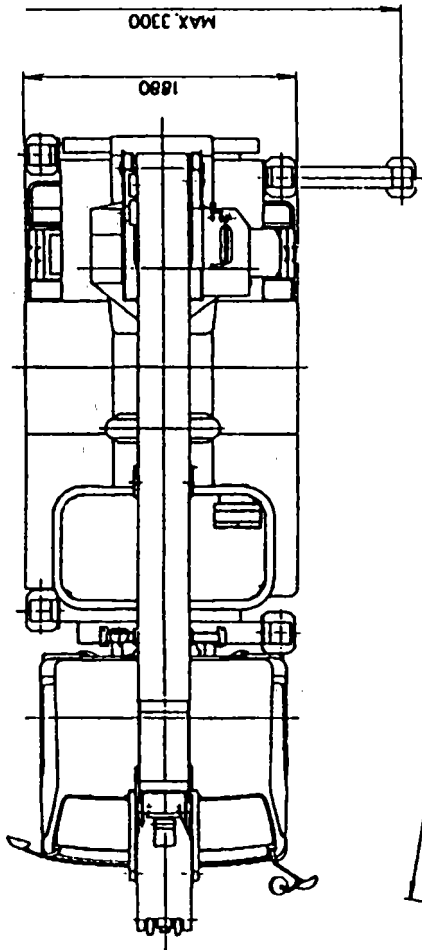
NOTES:

1. The working range is based on the condition that the outriggers are installed on firm and level surface.
2. The above figure indicates the working range to the sides. The working ranges toward the front and rear are the same as the working range when the outrigger is fully extended.
3. The deflection of the boom is not incorporated in the above figure.



DIMENSIONS (1/50)

MITSUBISHI U-FE538B



DIMENSIONS (1/50)

ISUZU KC-NKR66E2N

